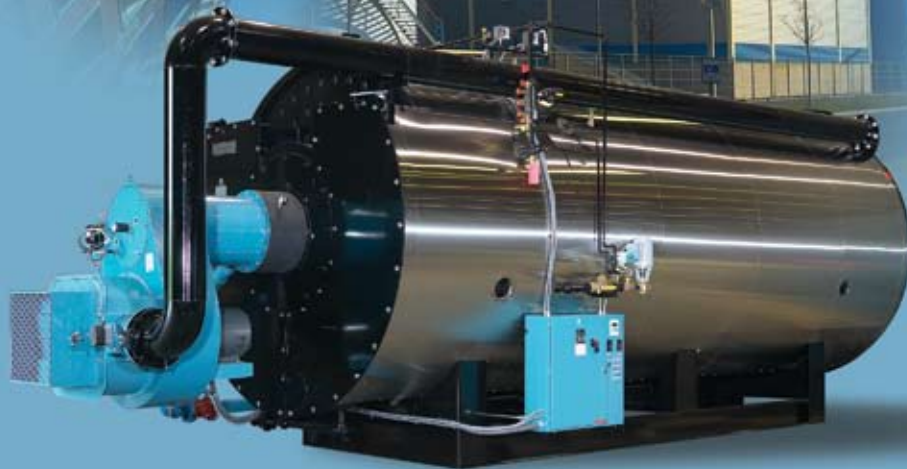




York - Shipley Global

Division of AESYS Technologies, LLC

®



Leading Manufacturer of
Packaged Boiler Systems

www.york-shipleysglobal.com

The Most Trusted Name in the Boiler Industry

York-Shipley Global provides one of the most diverse selections of packaged horizontal firetube boiler assemblies for industrial processes and comfort space heat applications. Throughout the world, our products generate reliable steam and hot water service at sustained operating efficiencies. All products meet or exceed established industry codes and standards, affording flexible solutions for your project-specific application.

Boilers and Boiler Room Accessories for a Total Integrated Approach

York-Shipley Global's packaged firetube boiler, burner and auxiliary equipment create a totally integrated boiler systems approach optimizing installation, performance and equipment lifecycle. We maintain our role as a most versatile and leading manufacturer of packaged boiler systems through consistent product improvement, development and market responsiveness.

York-Shipley Global Offers a Full Spectrum of Boiler Systems

Boiler capacities are available in numerous configurations from 20 to 2,200 BHP (196 to 21,566 kW) at standard design pressures of 15 to 300 PSIG (103 to 2,068 kPa). The packaged horizontal firetube boiler assemblies are available in dry-back or water-back configuration, employing 2-, 3- or 4-pass flue gas flow arrangements or as a custom heat recovery steam generation assembly in a single to 4-pass design.



NYC-DEP
North River WPCP
New York, NY USA



Series 500C Dry-Back
Packaged Firetube Boiler



Packaged Boiler Systems and Ancillary Equipment



Firetube Boilers: Dry-Back Models

The standard York-Shibley Global two, three and four pass dry-back horizontal firetube boiler incorporates a centerline furnace providing for moderate heat release rates and reduced thermal stresses on front and rear tube sheets. Additionally, the 'down-draft' design feature forces the flue gases through the lower part of the boiler where cooler water is stored. Firetube cleaning can be fully accommodated through the front or rear of the boiler for simplified maintenance.



Firetube Boilers: Water-Back Models

The water-back three or four pass design offers a large low offset furnace configuration thereby accommodating low heat release rates with reduced thermal stress on rear tube sheets. They maintain a larger water volume and a larger steam storage space for improved performance during swing load operation. Water-back models include a completely water jacketed and cooled cylindrical rear flue gas reversing chamber allowing scale to drift to the bottom for easy removal.



Vertical Tubeless Boilers

York-Shibley Global vertical tubeless boilers are equipped with an integral condensate storage tank which can accommodate optional factory packaged feedwater, water softener and chemical feed systems for one of the smallest footprints in the industry.



Heat Recovery Systems

York-Shibley Global Heat Recovery boilers are designed to take advantage of process waste gasses to produce steam or hot water for a multitude of applications. The standard dry-back horizontal firetube design is available in two- or three-pass configurations and custom designed single and four- pass configurations.



Fuel Burners

York-Shibley Global offers you the choice and flexibility of selecting from the most respected brands of burner manufacturers in addition to the York-Shibley Global integral and retrofit line of packaged burners. High performance fuel burner selections include pressure, air and steam atomizing medium for gas, LPG, #2 - #6 oil and combination.



Auxiliary Equipment

York-Shibley Global's Total Integrated Approach includes ancillary equipment that is correctly matched to your system's requirements. Equipment includes but is not limited to deaerators, feedwater, chemical feed and blowdown systems and economizers to name a few.



Committed to delivering the highest level of product quality, customer service and satisfaction.

AESYS Technologies, LLC serves North American and International markets with York-ShipleY Global packaged firetube boiler assemblies, ancillary boiler room equipment and pressure vessel products. The company also offers Jackson & Church HVAC Global heating, ventilating and air conditioning equipment, along with Custom Fabrication capabilities and Educational Services comprising boiler and welder training programs.

York-ShipleY Global and Jackson & Church HVAC Global product brands are recognized for high performance, dependability and utmost quality, providing for long life-cycle service in industrial, commercial and institutional facilities worldwide.

AESYS' strength resides in its commitment and ability to deliver the highest level of product quality, customer service and satisfaction through its product brand offerings and extensive worldwide network of sales, service and regional management representatives.

Corporate headquarters and primary manufacturing facility is strategically located in South Central Pennsylvania, USA - at the crossroads of major highways, rail transportation systems and international shipping ports.

Visit AESYS at www.aesystech.com for more information.



AESYS Technologies, LLC
693 North Hills Road
York, PA 17402-2211 USA
Tel: (+1) 717-755-1081
Fax: (+1) 717-755-0020
www.aesystech.com
Email: inquiries@aesystech.com